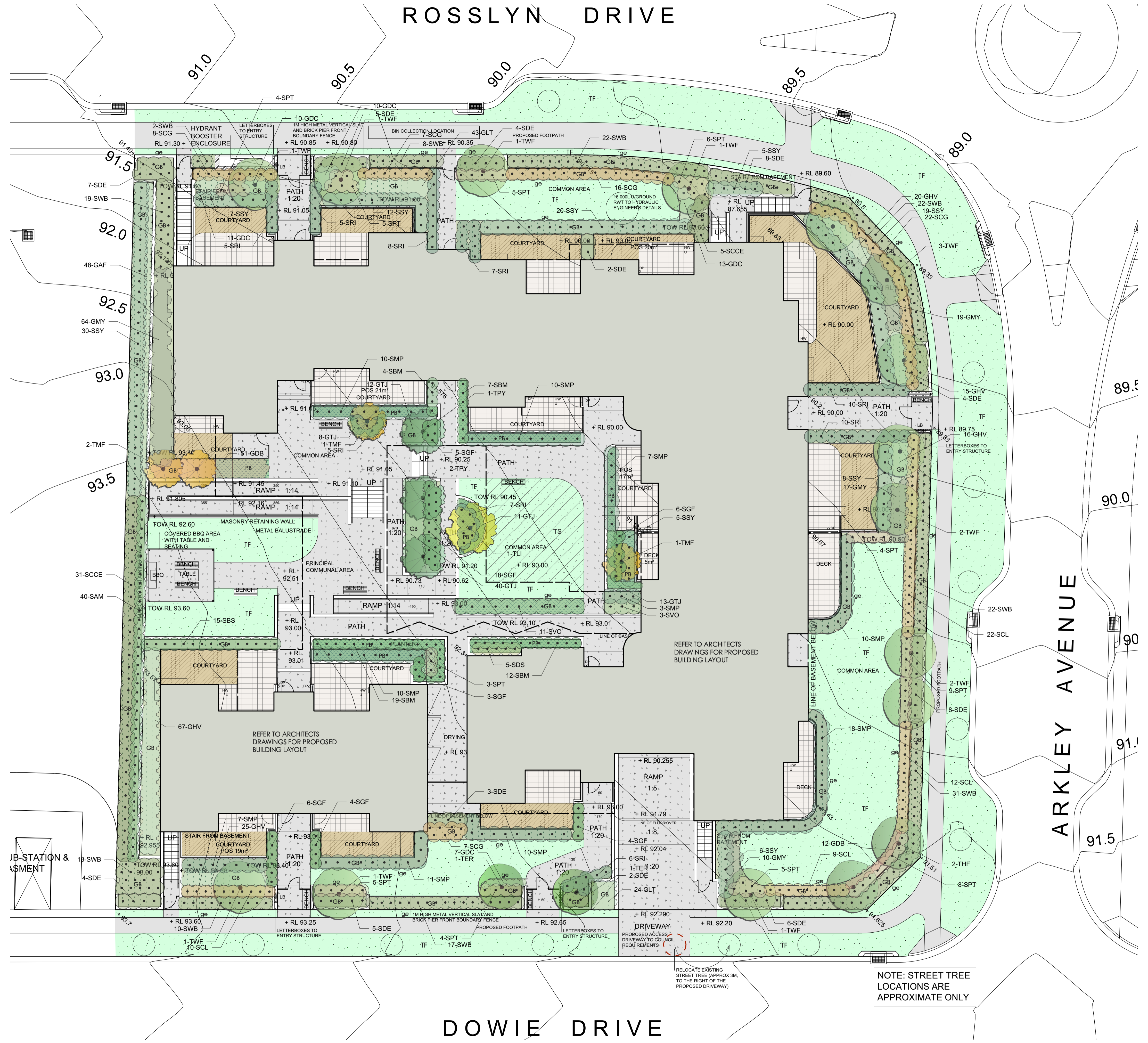


LEGEND

- Existing trees to be retained
- Proposed tree plantings
- Proposed screen shrub plantings
- Concrete driveway / path pavement
- Non slip tiles pavement
- Proposed porous pavement
- Proposed garden bed and plantings
- Proposed planter bed on slab
- Proposed turf area
- Turfed area on slab
- Concrete garden edge

Notes:

- Refer Architects drawings for pavement, walls, fence, steps, and levels
- Refer Engineers drawings for hydraulic information
- Refer GD.02 for Plant Schedule, landscape details and specification



Family & Community Services
Land & Housing Corporation
www.housing.nsw.gov.au

LOCKED BAG 4009
ASHFIELD NSW BC1800
PHONE No (02) 8753 9000

Barry Rush & Associates Pty Ltd
Architects
Suite 25A, 2 Beattie Street, Balmain, NSW, 2041
Phone: (612) 9555 9028 Fax: (612) 9810 0161
Email: info@barryrush.com.au
www.barryrush.com.au

NOMINATED ARCHITECT:	
Barry Rush & Associates Pty Ltd	
Architects	
Suite 25A, 2 Beattie Street, Balmain, NSW, 2041	
Phone: (612) 9555 9028 Fax: (612) 9810 0161	
Email: info@barryrush.com.au	
www.barryrush.com.au	

PROJECT MANAGER	
LAND & HOUSING CORPORATION	
PROJECTS	
PH (02) 8544 1683 FAX (02) 8079 6814	
ARCHITECT	
BARRY RUSH & ASSOCIATES PTY LTD	
PH (02) 9555 9028	
CONCEPT ARCHITECT	
STUDIO ZANARDO	
PH 0414 645 399	

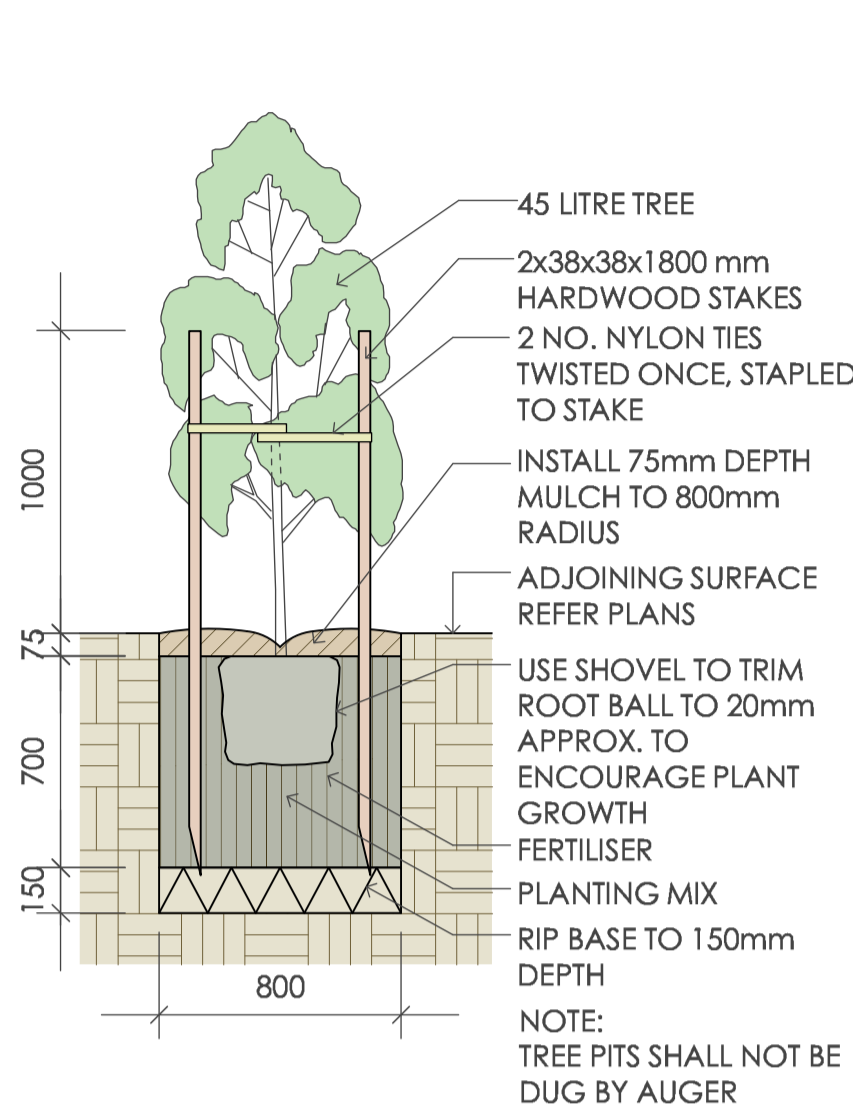
STRUCTURAL & ELECTRICAL CONSULTANT	
GREENVIEW CONSULTING PTY LTD	
PH (02) 8544 1683 FAX (02) 8079 6814	
CIVIL/STORMWATER & HYDRAULIC CONSULTANT	
INLINE HYDRAULIC SERVICES	
PH (02) 9501 1507 FAX (02) 9501 1508	
LANDSCAPE CONSULTANT	
GREENLAND DESIGN PTY LTD	
PH 0403 164 198	

BUSINESS PARTNER	
LAND AND HOUSING CORPORATION	
RENEWAL	
Level 2, 223-239 Liverpool Road	
ASHFIELD NSW 2131	
PHONE No (02) 8753 9000	

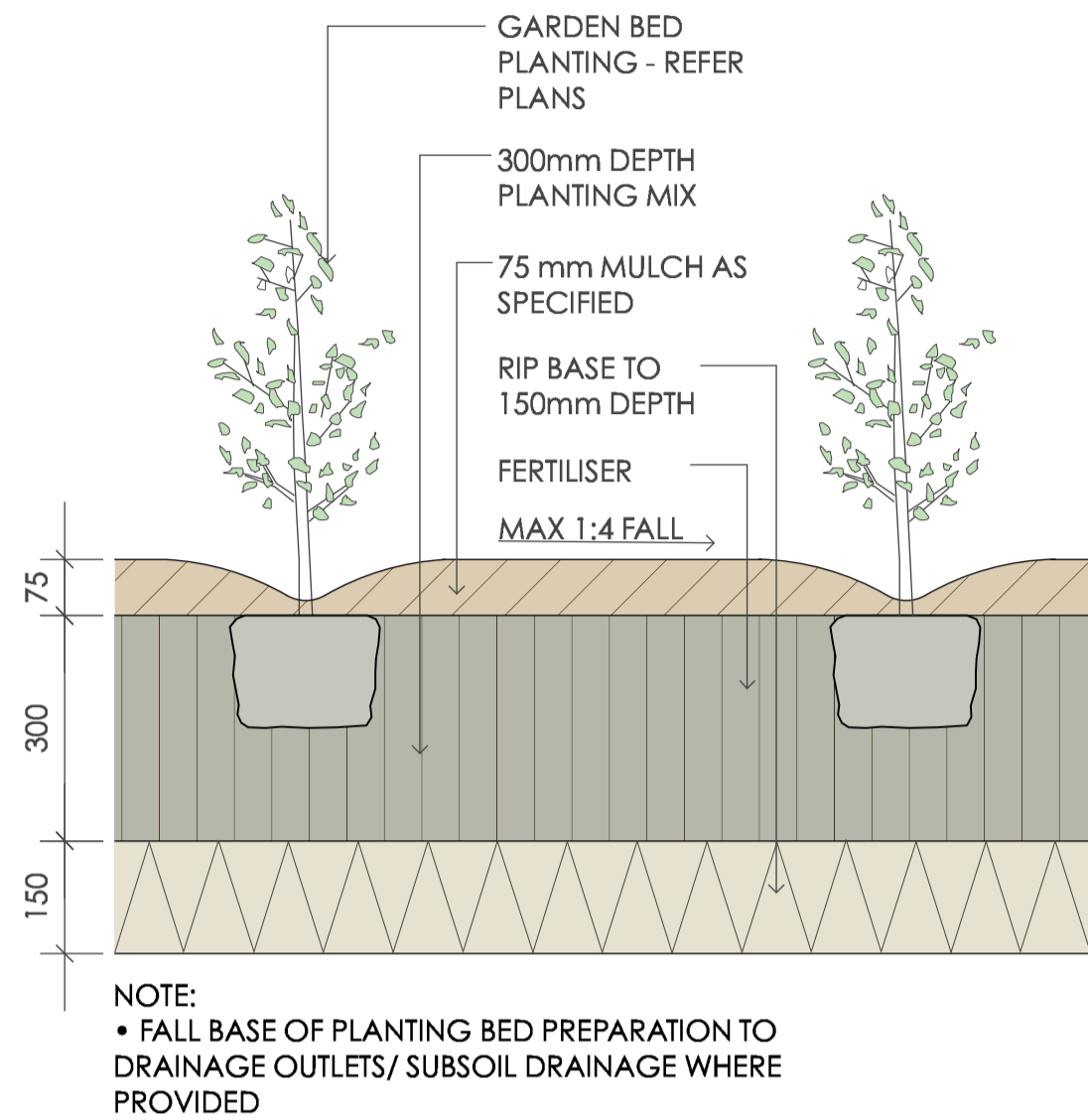
PROJECT:	
PROPOSED SENIORS LIVING HOUSING	
LOT 1069 DP 12032666	
ROSSLYN DRIVE CLAYMORE	

TITLE:	
LANDSCAPE PLAN	
FILE: 1526.LA01	
R. DATED: 07/06/2017 4:20 PM	

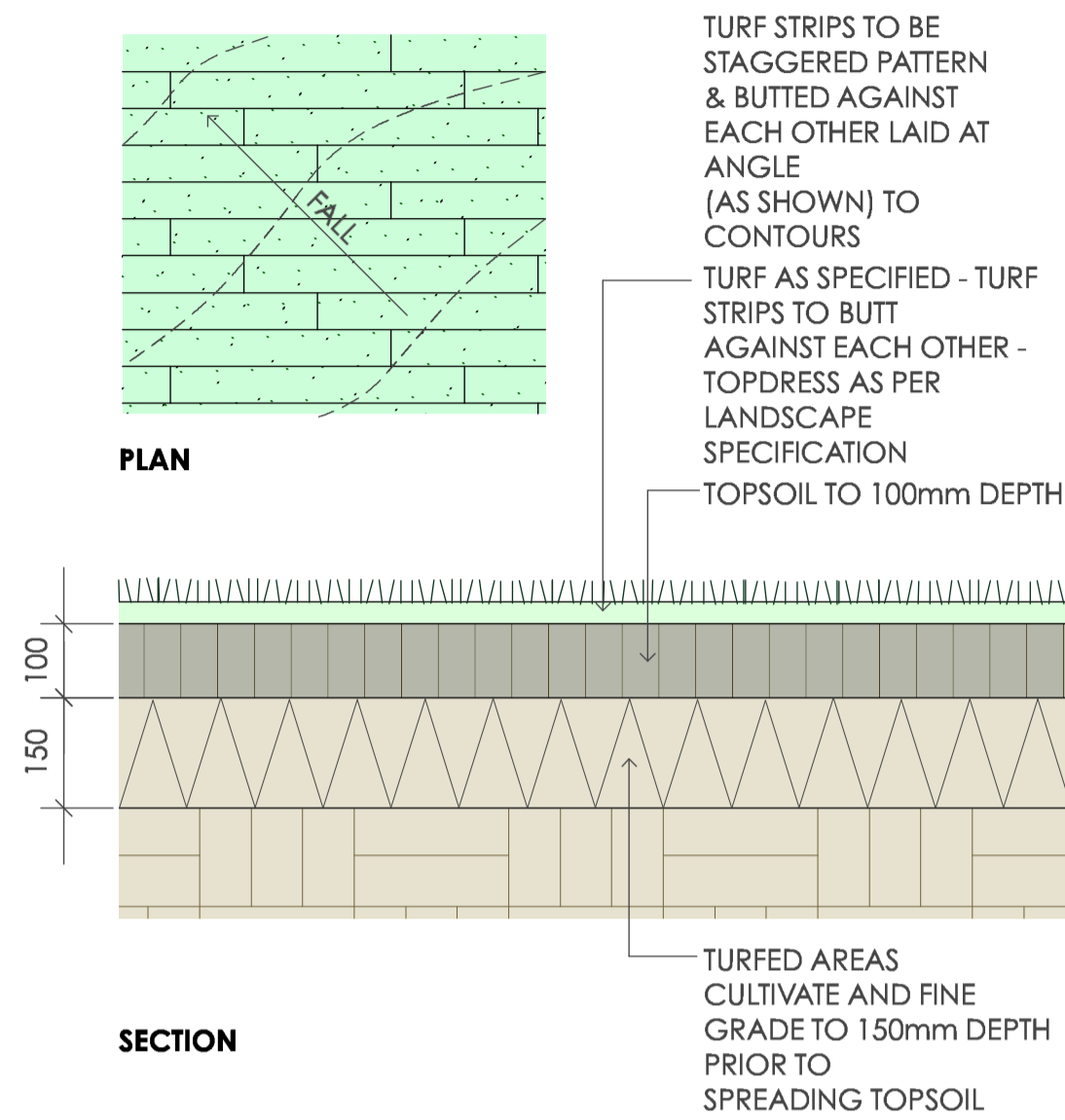
STATUS:	
CC	
DATE: 07/06/2017	
SCALE: 1:150	
PROJ: -	
PROJECT NO. BGQZM	
STAGE: CC	
DRAWN: CL	
CHECKED: GD	
TYPE: LA	
SHEET: 1 of 2	
REV: E	



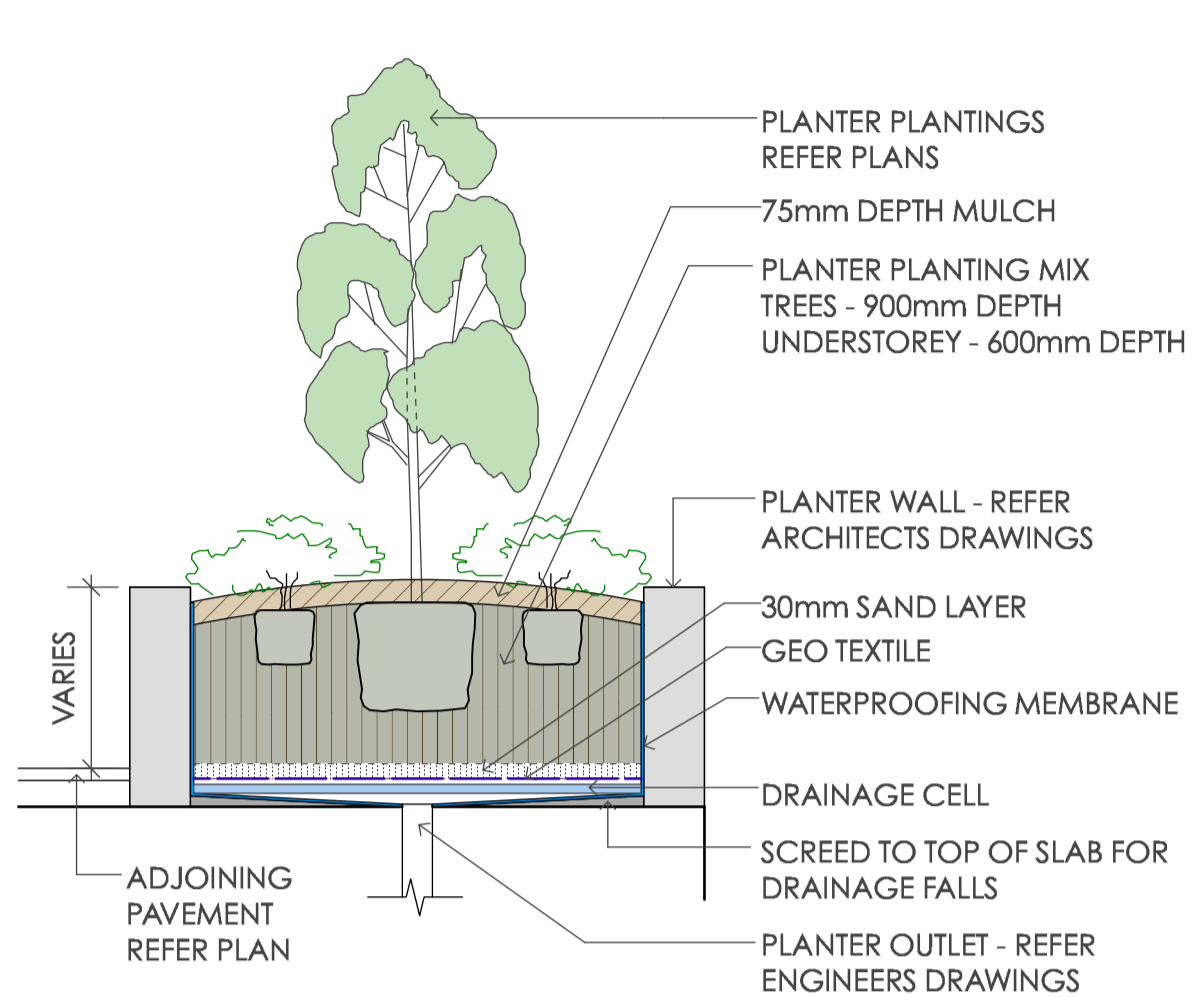
1 45 Litre Tree Planting
scale 1:25



2 Planting Bed Detail
scale 1:10



3 Turfing
scale as shown



4 Planter Bed On Slab
scale 1:25

Plant Schedule							
ID	Qty	Common Name	Botanical Name	Size	Mature Height	Mature Spread	Native (N)
Trees							
TER	2	Blueberry Ash	Elaeocarpus reticulatus	45Litre	6 - 8m	3.5 - 6m	N
THF	2	Native Frangipani	Hymenosporum flavum	45Litre	8 - 12m	3.0 - 4m	N
TLI	1	Crepe Myrtle	Lagerstroemia indica 'Natchez'	45Litre	6 - 8m	3.5 - 6m	
TMF	4	Flowering Crabapple	Malus x floribunda	45Litre	4 - 6m	6 - 10m	
TPY	3	Capital Flowering Pear	Pyrus calleryana 'Capital'	45Litre	8 - 12m	2.0 - 3.5m	
TWF	14	Weeping Lilly Pilly	Waterhousia floribunda	45Litre	6 - 8m	3.5 - 6m	N
Shrubs							
SAM	40	Allyn Magic	Acmena 'Allyn Magic'	200mm	1.0 - 1.5m	0.8 - 1.0m	N
SBA	1	Hairpin Banksia	Banksia spinulosa	200mm	0.9 - 1.5m	0.9 - 1.2m	N
SBE	1	Heath-leaved Banksia	Banksia ericifolia	200mm	2 - 4m	2.5 - 4m	N
SBM	42	Japanese Box	Buxus microphylla var japonica	200mm	0.6 - 0.8m	0.8 - 1.0m	
SBS	16	Common Boxwood	Buxus sempervirens	200mm	1 - 1.5m	0.9 - 1.2m	
SCCE	37	Scarlet Bottlebrush	Callistemon citrinus 'Endeavour'	200mm	3 - 5m	2.0 - 3.5m	N
SCG	61	Bottle Brush	Callistemon "Great Balls of Fire"	200mm	1 - 1.2m	1.0 - 1.5m	N
SCL	54	Little John	Callistemon "Little John"	200mm	0.9 - 1.5m	0.9 - 1.2m	N
SDE	59	Gymea Lily	Doryanthes excelsa	200mm	1.2 - 2m	1.2 - 2.0m	N
SDS	5	Duranta Gold	Duranta 'Sheenas Gold'	200mm	0.8 - 1.2m	0.9 - 1.2m	
SGF	46	Florida Gardenia	Gardenia augusta 'Florida'	200mm	0.8 - 1.0m	0.9 - 1.2m	
SGH	1	Grevillea	Grevillea 'Honey Gem'	200mm	1.5 - 3m	1.2 - 2.0m	N
SGS	1	Superb Grevillea	Grevillea x 'Superb'	200mm	1.5 - 3m	1.2 - 2.0m	N
SMF	1	Banana Shrub	Michelia figo	200mm	1.5 - 3m	2.0 - 3.5m	
SMP	97	Orange Jessamine	Murraya paniculata	200mm	1.5 - 3m	3.5 - 6m	
SNN	1	Dwarf Sacred Bamboo	Nandina domestica 'Nana'	200mm	0.6m	0.8m	
SPT	59	New Zealand Flax	Phormium tenax 'Flamin'	200mm	0.6-0.9m	0.8 - 1.0m	
SRI	64	Indian Hawthorn	Raphanolepis indica 'Oriental Pearl'	200mm	0.9 - 1.5m	1.2 - 2.0m	
SSY	113	Select Form Lilly Pilly	Syzygium 'Select Form'	200mm	3 - 4m	1.2 - 2.0m	N
SSYF	1	Royal Flame Lilly Pilly	Syzygium 'Royal Flame'	200mm	1.5 - 2m	1.0 - 1.5m	N
SVO	15	Dense Form Viburnum	Viburnum odoratissimum 'Dense Form'	200mm	3 - 4m	2 - 3m	
SWB	171	Blue Gem	Westringia 'Blue Gem'	200mm	0.8 - 1.0m	0.9 - 1.2m	N
Ground Covers							
GHV	144	False Sarsaparilla	Hardenbergia violacea "Meema"	150mm	0.75 - 0.9m	1.2 - 2.0m	N
GAF	48	Kangaroo Paw 'Gold Velvet'	Anigozanthos 'Gold Velvet'	150mm	0.75 - 0.9m	0.3 - 0.6m	N
GHP	1	Licorice Plant	Helichrysum petiolare 'Limelight'	150mm	0.3 - 0.45m	0.6 - 0.9m	
GDC	52	Blue Flax-lily	Dianella caerulea	150mm	0.6 - 0.75m	0.6 - 0.9m	N
GLT	68	Spiny-headed mat rush	Lomandra longifolia 'Tanika'	150mm	0.45 - 0.6m	0.6 - 0.9m	N
GDB	64	Flax Lily	Dianella tasmanica 'Blaze'	150mm	0.4 - 0.5m	0.4 - 0.6m	N
GLM	1	Giant Lily Turf	Liriope muscari 'Evergreen Giant'	150mm	0.0 - 0.3m	0.0 - 0.3m	
LK	1	Spiny-headed Mat-Rush	Lomandra longifolia 'Katrinus'	150mm	0.75 - 0.9m	0.9 - 1.2m	N
DG	1	Blue Wild Iris	Dietes grandiflora	150mm	0.75 - 0.9m	0.0 - 0.3m	N
GTJ	85	Star Jasmine	Trachelospermum jasminoides	150mm	0.3 - 0.6m	1 - 4m	
GMV	111	Carpel Spreading Myoporum	Myoporum parvifolium 'Yareena'	150mm	0.45 - 0.6m	0.9 - 1.2m	N
GWM	1	Mundi	Westringia fruticosa 'Mundi'	150mm	0.45 - 0.6m	0.9 - 1.2m	N
GTA	1	Asian Jasmine	Trachelospermum asiaticum	150mm	n/a	3 - 5m	
GBB	1	Birthday Candle	Banksia spinulosa 'Birthday Candle'	150mm	0.45 - 0.6m	0.9 - 1.2m	N

SPECIFICATION NOTES

PLANTING MATERIALS

Planting Mix:

Planting mix for tree pit backfill shall be "Organic Garden Mix" consisting of

- 50% Black Soil
- 20% Coarse Sand
- 30% Organic Material

as available from Australian Native Landscapes, Phone: [02] 9450 1444, or approved equivalent. Samples shall be provided to the Superintendent prior to ordering or delivery to site. Any material delivered to site, that is rejected by the Superintendent, shall be removed by the contractor at his own expense. Minimum depths of mix to all planting bed areas is as specified on details.

Planter Mix:

Planter mix shall be Peat and Planter Mix as supplied by Australian Native Landscape Pty Ltd (ph [02] 9450 1444 or approved equivalent).

Planter Drainage Cell:

Planter drainage cell shall be VersiCell as supplied by Elmich Australia Pty Ltd (ph [02] 9648 2073 or approved equivalent).

Mulch:

Mulch to garden bed:

Mulch shall mean hardwood mulch (25mm grade), free from material derived from Privet, Willow, Poplar, Coral trees, or other noxious weeds. Any mulch exceeding the 25mm grade shall be rejected / removed from the site. Graded hardwood mulch to be supplied by Australian Native Landscapes Pty Ltd Phone (02) 9450 1444, or approved equivalent.

Mulch to planter beds:

Mulch to planter beds shall be Pine bark mini nuggets mulch (25mm grade), free from fines and as available from Australian Native Landscapes Pty Ltd Phone (02) 9450 1444, or approved equivalent.

Spread mulch so that after settling, it is:

- smooth and evenly graded between design surface levels;
- flush with adjacent finished levels;
- of the required depths (75mm); and
- sloped towards the base of plant stems in plantation beds, but not in contact with the stem (not closer than 50mm in the case of gravel mulches).

Place after the preparation of the planting bed, planting and all other work.

Plant Material:

All plant material must be true to the species. No substitutes will be allowed. All plants shall be free of fungus and insect damage. All plants shall be healthy, well shaped, not soft or force grown and not root bound.

Plants are available from **Andreassens Green** wholesale nursery, contact Darren (02) 8777 4713, email darren@andreassensgreen.com.au or approved equivalent.

Turfed areas:

All new turfed areas are to be selected weed free Soft Leaf Buffalo. Turf shall be laid neatly butted with staggered joints, flush with adjacent surfaces and have even running falls to all drainage points.

All new turfed area shall have a minimum 150mm depth of weed free top soil, placed and levelled prior to turfing.

PREPARATION AND HARDWORKS

Excavating for Spot Planting

To planting areas, excavate a hole for each plant large enough to provide not less than twice the depth and twice the diameter than the root ball of species to be planted.

Staking

Use durable hardwood, straight, free from knots or twists, pointed at one end. Drive stakes into the ground a minimum one third of their length, avoiding damage to the root system.

- 45 Litre trees in 2 x 38x38x1800mm Hardwood Stake with double Nylon tie
- TIES: Provide a 50mm wide Nylon webbing tie per stake, fixed securely to the stakes, one tie at half the height of the main stem and the other as necessary to stabilise the plant.

Porous Pavement

MATERIAL: Porous pavement shall be Stoneset Pour On Gravel binder pavement colour Gold as available from Pour On Pty Ltd (Phone 1300 392 155) or approved equivalent. Install to manufacturer's recommendations. Sample to be provided for approval by Superintendent.

Concrete Edge

MATERIALS: Concrete to be off white colour.

INSTALLATION: Supply and install 150 x 100mm (width) reinforced flush concrete kerb to locations as approved on site by the Superintendent. Provide flexible joints at maximum 3 metre intervals in colour to match concrete. Lightly expose aggregate through rinsing / sponging. Tool finish exposed edges with 10mm pencil round to prevent chipping.

Bench

MATERIALS:

Park bench to be Model No. CMP4 bench with stainless steel frame, hardwood battens, supported on fabricated steel base as available from:

Street Furniture Australia Pty Ltd

Tel: 1800 027 799

SEATING COLOUR/FINISH:

-Frame: Black power coated finish

-Battens: Eco-certified hardwood oiled

INSTALLATION:

Sub surface fixing as manufacturers details. Ensure that seat posts are installed plumb and vertical and that seat battens are horizontal. Where seats are located on sloping ground, coordinate with supplier to provide seat with custom leg lengths to enable horizontal installation.

MAINTENANCE / PLANT ESTABLISHMENT

Maintenance shall apply to all hard and soft landscape materials installed prior to the "handover" and acceptance by the Principle's Authorised Person. The maintenance period shall convenience at the granting of practical completion and shall extend for 26 weeks.

Maintenance shall consist of the following works:

- Follow a daily watering programme to be approved by the Principle's Authorised Person. Water all plants individually, twice per week or when necessary to ensure constant plant growth. Water all turf and native grassed areas, twice per week.
- Apply appropriate weed control sprays and hand weed as required to maintain planting areas, native grassing bed areas, turfed areas, paved areas, and tree pits in turf free of weed or rogue grass growth.
- Regularly tidy and top up mulch and trim edges to prevent spill over onto paved / grassed areas.
- Spray to control pests and diseases.
- Replace plants, which fail with plants of a similar size and quality as originally specified to approval of Superintendent. Costs of replacement shall be the responsibility of the Contractor. Replacement planting will be undertaken within 2 weeks of identification of dead material or instruction be the Superintendent.
- Report any incidence of plants stolen or destroyed by vandalism.
- Adjust stakes and ties to plants as necessary. Ensure that strangulation of plants does not occur.
- Prune and shape plants as directed or where necessary.
- Make good any defects or faults arising out of defective workmanship or materials.
- Fertilise lawn areas to maintain healthy growth.
- Make good any erosion or soil subsidence, which may occur including soft areas in pathways.
- Mow lawn to maintain neat healthy growth.
- A final inspection shall be made by the Principle's Authorised Person before handover. Any items requiring rectification shall be repaired before the works are finally approved, and retention moneys released.

NOTE:

- All finished levels are to be verified by Contractor on site.
- All landscape works be in strict accordance with Council's landscape code and guidelines
- This plan to be used in conjunction with all other submitted architectural, hydraulics and engineering drawing where applicable.



Family & Community Services
Land & Housing Corporation

LOCKED BAG 4009
ASHFIELD NSW BC1800
PHONE No (02) 8753 9000

NOMINATED ARCHITECT:
Barry Rush & Associates Pty Ltd
Architects
Suite 25A, 2 Beattie Street, Balmain NSW, 2041
Phone: (612) 9555 8028 Fax: (612) 9810 0161
Email: info@barryrush.com.au
www.barryrush.com.au

E	07/06/2017	REVISIONS
D	11/05/2017	REVISIONS
C	20/04/2017	FOR CC
B	06/02/2017	FOR DA
A	02/12/2016	DRAFT DA
REV	DATE	NOTATION/AMENDMENT
DO NOT SCALE DRAWINGS, CHECK ALL DIMENSIONS ON SITE. FIGURED DIMENSIONS TAKE PRECEDENCE.		

PROJECT MANAGER LAND & HOUSING CORPORATION PROJECTS PH (02) 8753 8242 FAX (02) 8753 8014
ARCHITECT BARRY RUSH & ASSOCIATES PTY LTD PH (02) 9555 8028
CONCEPT ARCHITECT STUDIO ZANARDO PH 0414 645 399

STRUCTURAL & ELECTRICAL CONSULTANT GREENVIEW CONSULTING PTY LTD PH (02) 8544 1683 FAX (02) 8079 6814
CIVIL/STORMWATER & HYDRAULIC CONSULTANT INLINE HYDRAULIC SERVICES PH (02) 9501 1507 email@inline.com.au
LANDSCAPE CONSULTANT GREENLAND DESIGN PTY LTD PH 0403 164 198

BUSINESS PARTNER: LAND AND HOUSING CORPORATION RENEWAL Level 2, 223-239 Liverpool Road ASHFIELD NSW 2131 PHONE No (02) 8753 9000
--

PROJECT: PROPOSED SENIORS LIVING HOUSING LOT 1069 DP 12032666 ROSSLYN DRIVE CLAYMORE
--

TITLE: LANDSCAPE DETAILS & SPECIFICATION	
FILE: 1526.LA01	PLOTTED: 07/06/2017 4:20 PM

STATUS: CC	DATE: 07/06/2017	SCALE: VARIES	PROJ: -	PROJECT No. BGQZM
DRAWN: CC	CHECKED: GD	LANDSCAPE ARCH		